



## TECHNOLOGY RESOURCES FOR UC DAVIS STUDENTS

JOSHUA HORI  
 ACCESSIBLE TECHNOLOGY ANALYST  
 STUDENT DISABILITY CENTER



1

## STUDENT DISABILITY CENTER

### AGENDA

- About the SDC**  
**Accessible Technology:**
- eReading
  - Magnification tools
  - Text to Speech (TTS)
  - Notetaking apps
  - Dictation apps
- Cloud**  
**Testing Center**



**Jordan, Class of 2020**

"Defining myself, as opposed to being defined by others, is one of the most difficult challenges I face." -Carol Moseley



2

STUDENT DISABILITY CENTER

**SDC Purpose**

- **Facilitate equal opportunity and full participation in UCD programs, services, and activities**
- **Students**
  - Provide guidance and support to students
  - Evaluate accommodation requests, extend services
- **Faculty/Community Partners**
  - Serve as an informational and consultation resource
  - Protect academic rigor and technical standards
- **Institution**
  - Create a welcoming office and community
  - Ensure that the University meets legal obligations



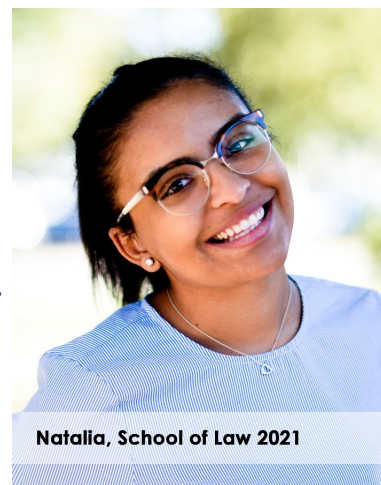
Jarrod, 2021

3

STUDENT DISABILITY CENTER

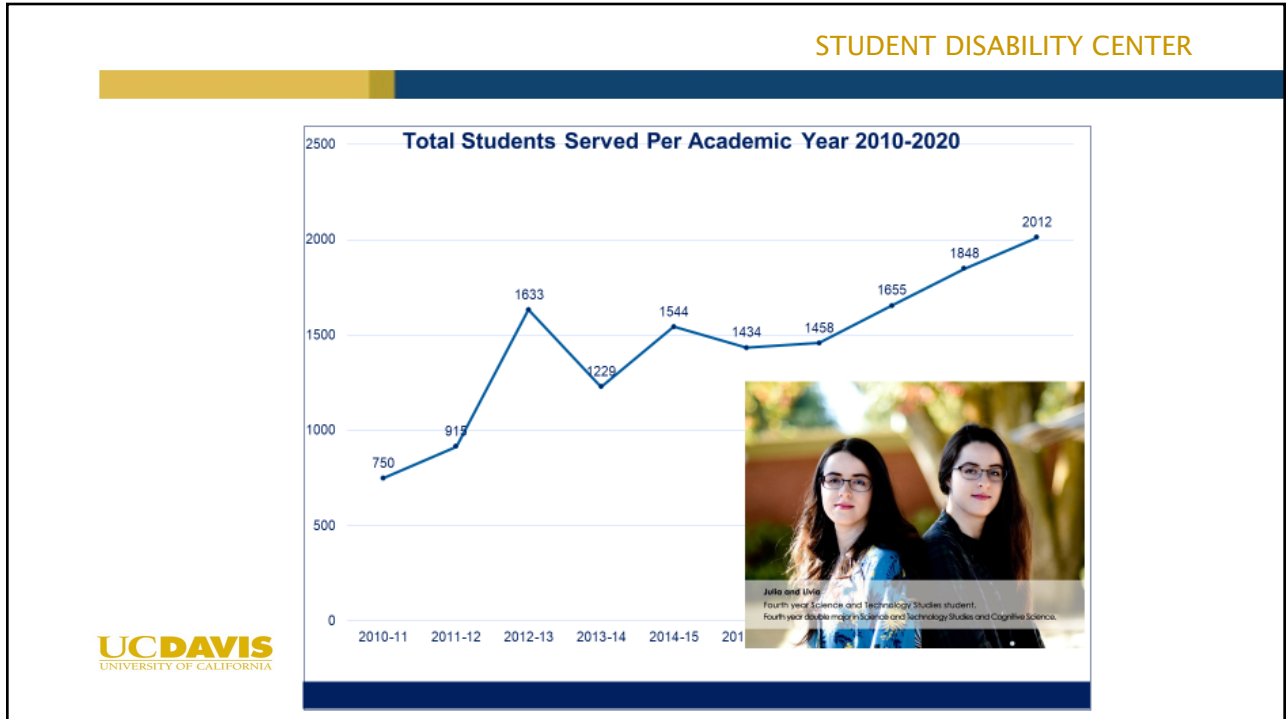
**Inclusion**

- **The presence of disability is an expression of human diversity**
- **Nationally, 9-11% of higher education students disclose disability and request accommodation**
- **2,012 students were registered with the SDC, or about 6% during the 2019/2020 academic year**

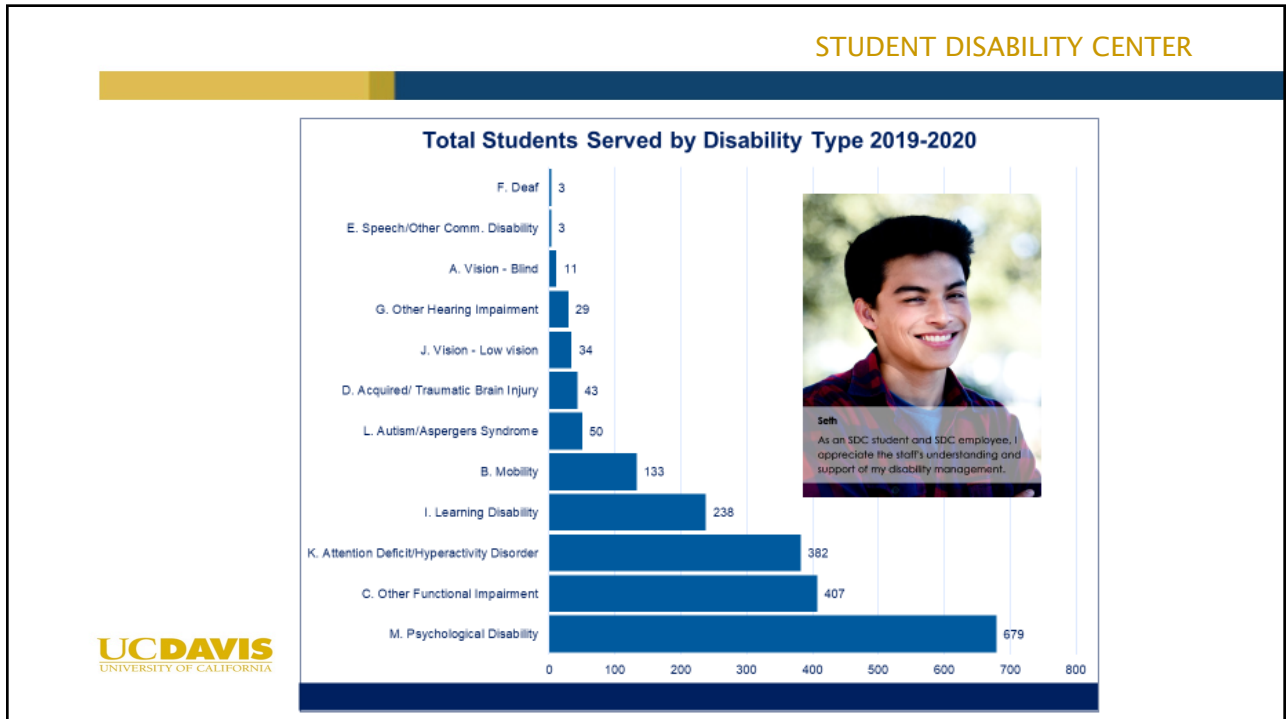


Natalia, School of Law 2021

4



5



6

## STUDENT DISABILITY CENTER

**Confidentiality**

- Student must disclose their disability to SDC and follow policy to receive official academic accommodations.
- Accommodation information is released to facilitate services on a need to know basis – disability information is not shared.
- Records are kept separate from other academic and institutional records and do not appear on transcripts or diplomas.

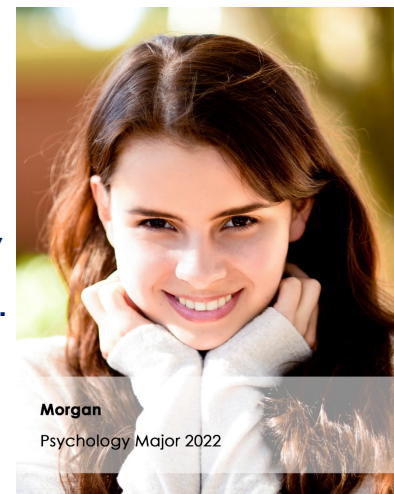


7

## STUDENT DISABILITY CENTER

**Tips for Students**

- Reach out to the Student Disability Center early to learn what services are available and how to access them – *even if you aren't sure that you will use them.*
- Students may become eligible for services at any point during the academic year, however, it can take a couple of weeks to put services into place.
- Keep in mind that the quarter system is just 10 weeks long, exams and deadlines come up quickly.



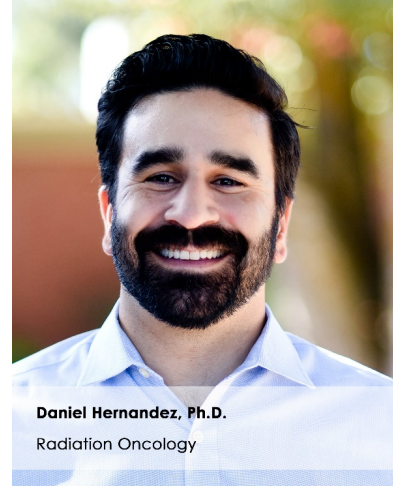
8



## STUDENT DISABILITY CENTER

**Tips for Instructors**

- Students may not realize that they qualify for services through the SDC
- Students may become eligible for services at any point during the academic year
- Assume that students will use all of the services outlined in their Letter of Accommodation
- Students may require accommodation services beyond the classroom such as when working with Housing, Advising, Tutoring Services, OSSJA, ..



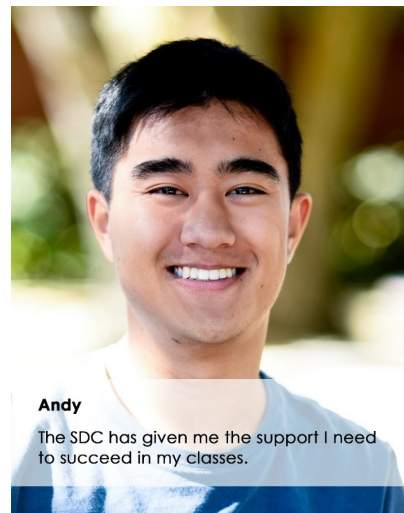
**Daniel Hernandez, Ph.D.**  
Radiation Oncology

9

## STUDENT DISABILITY CENTER

**CART and Interpreting**

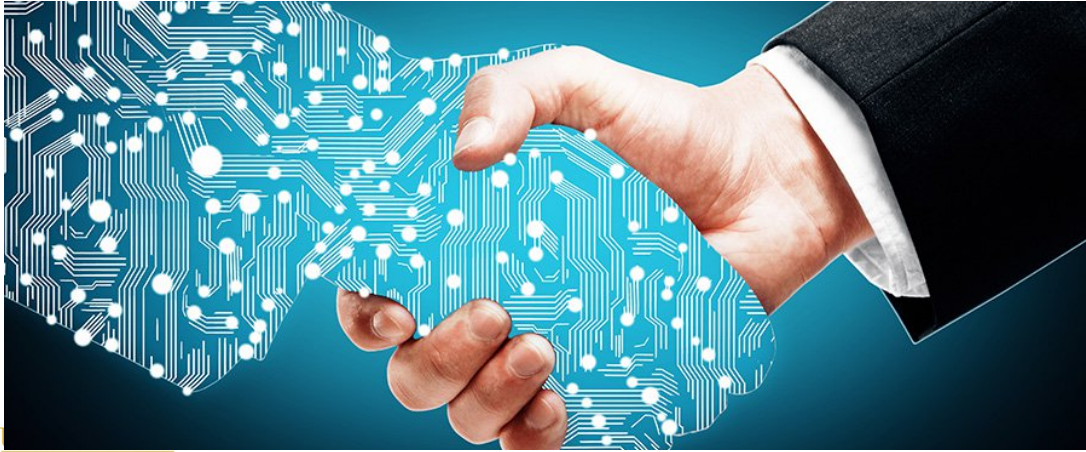
- All captioning and interpreting for course content are scheduled by the SDC.
- Beth Stein - brstein@ucdavis.edu
- 3 CART staff
- 2 Interpreting staff
- Eaton Interpreting
- West Coast Captioning



**Andy**  
The SDC has given me the support I need to succeed in my classes.

10

## Assistive Technologies



UNIVERSITY OF CALIFORNIA

11

## Dyslexia

A friend who has dyslexia describes to me how she experiences reading. She can read, but it takes a lot of concentration, and the letters seem to "jump around".

I remember reading about [dyslexia](#). Wouldn't it be possible to do it involuntarily on a website with JavaScript? Sure it would.

Feel like making a bookmarklet of this or something? [Fork it](#) on GitHub.

Dyslexia is characterized by difficulty with language to read fluently and with accurate comprehension of written material. This includes difficulty with phonological awareness, phonological decoding, processing speed, orthographic coding, auditory-motor memory, language skills/vocabulary comprehension, and/or rapid naming.

Developmental reading disorder (DRD) is the most common form of dyslexia. Dyslexia is the most recognizable of reading disorders, however not all reading disorders are known to be dyslexia.

**Profile**  
03 March 2016

### Tags

[dyslexia](#) <sup>1</sup>

[dyslexia](#) <sup>1</sup>

[dyslexia](#) <sup>1</sup>

12

STUDENT DISABILITY CENTER

**OrCAM**

- OCR and read content on the fly



13

STUDENT DISABILITY CENTER

**NuEyes**

- Android OS
- OCR and Magnification (12x)
- Mobile CCTV



14

## STUDENT DISABILITY CENTER

## Vision Buddy

- VR Magnification
- HDMI input
- Wireless



**UC DAVIS**  
UNIVERSITY OF CALIFORNIA

15

## STUDENT DISABILITY CENTER

## SensusAccess Document Converter

- Optical Character Recognition built in
- Heavy and/or busy graphics may cause issues
- Poorly scanned PDF's/files will provide poor results
- Accessible Word files will convert into Accessible PDF's
- ePub (Mobile Devices) and MOBI (Kindle) conversions supported
- For problems or assistance, email [sensusaccess@ucdavis.edu](mailto:sensusaccess@ucdavis.edu)

**UC DAVIS**  
UNIVERSITY OF CALIFORNIA

**SensusAccess**  
alternate media made easy



16

**STUDENT DISABILITY CENTER**

---

## SensusAccess Document Converter

- <https://bit.ly/3hRmzmB>
- **Online web portal for document conversions**
- **Convert JPEG, BMP, PDF, and more into other accessible formats!**
  - Audio and braille conversions supported
- **4 step process**
  - 1) Submit text, URL, or browse for a file to upload
  - 2) Select output
  - 3) Specify request
  - 4) Submit UC Davis email for retrieval
  - Takes approximately 10 - 15 minutes to process
  - Files < 30M are sent as an attachment, files > 30M can be downloaded

17

**STUDENT DISABILITY CENTER**

---

## SensusAccess email & LTI

**SensusAccess email:**

- [convert@sensusaccess.com](mailto:convert@sensusaccess.com)
- **Subject (DOC, DOCX, TXT, PDF, & HTML)**
- **Attach document to email**

**Enable SensusAccess LTI for Canvas:**

- <https://bit.ly/2FKnDM9>

- [Quizzes](#)
- [Pages](#)
- [People](#)
- [Files](#)
- [SensusAccess](#)**
- [Attendance](#)
- [Chat](#)
- [Reading List](#)
- [Media Gallery](#)
- [My Media](#)
- [Box](#)
- [Bookshelf](#)
- [Rubrics](#)
- [Grades](#) ⊗
- [Announcements](#) ⊗
- [Syllabus](#) ⊗
- [Outcomes](#) ⊗
- [Collaborations](#) ⊗
- [Conferences](#) ⊗

browser. Depending on the conversion type and file size longer waiting times may incur. For large files it is the email delivery method.

[Return to course](#)

**File selection**

File course files/01 Chapter.pdf ▾

**Requested conversion**

Accessibility conversion

MP3

E-book

Braille

**Conversion parameters**

Target format ▾

- doc - Microsoft Word
- doc - Microsoft Word**
- docx - Microsoft Word
- rtf - Rich Text Format
- pdf - Tagged PDF (text over image)
- pdf - Tagged PDF (image over text)
- xlsx - Microsoft Excel
- xlsx - Microsoft Excel
- csv - Comma separated
- txt - Windows text
- htm - HTML

**Delivery method**

Campus email

Download



18

ClaroSoftware

- ClaroRead
  - ScreenRuler
  - Color Overlay
  - Text to Speech
  - Convert text to audio or video
- Organize your day with ClaroSpeak
- iOS app for ePub and PDF
- Voice Recognition and ClaroPDF
- iOS app for PDF
- Annotate PDF's using

Screenshots- iPad

19

## STUDENT DISABILITY CENTER

### LiveScribe SmartPen

- Write notes on special LiveScribe paper recording handwritten notes & audio.
  - Handwritten notes act as a bookmark for audio playback.
- Sync with desktop software to charge Smartpen and backup notes.
- 2G models can record up to 150 hours of lecture

- Micro-USB Connector**: Transfers notes and audio to your computer and recharges your smartpen using a USB connection.
- Audio Jack**: Standard 3.5mm jack fits your own earphones or the LiveScribe 3-D Premium Recording Headset to enable binaural recording.
- Microphone**: Capture your meetings or lectures with crisp clear sound.
- OLED Display**: High-contrast OLED display makes it easy to navigate smartpen apps.
- Built-in Speaker**: Built-in speaker produces rich, full sound to play back your recorded audio.
- Memory Storage**: 2GB model holds 200 hours of audio.
- Ergonomic Grip**: The ergonomic grip design provides comfort during long meetings and lectures.
- Replaceable Ink Tip**: Simply remove the ink cartridge by pulling it out with your fingertips. Insert a new cartridge until it clicks into place.

20



**STUDENT DISABILITY CENTER**

## Sonocent Audio Notetaker

- **Android & iOS mobile apps**
  - Record audio
  - Take pictures of slides
  - Type in text notes
- **Mac & PC desktop software**
  - Cornell notes layout
  - Audio Clean up capabilities
  - Audio Replace capabilities
  - Ties into Dragon Naturally Speaking

**5 easy steps**

- 1 Pull out your iPhone or iPad and hit record
- 2 Highlight the important parts of the recording with colour and add notes
- 3 Break up your recording into sections, just like paragraphs
- 4 Tag your recording with the title, topic and speaker
- 5 Upload to Audio Notetaker to access later for editing, revision or further study

21

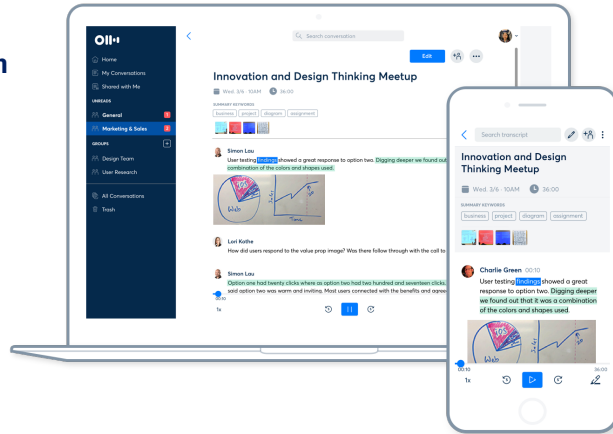
**STUDENT DISABILITY CENTER**

22

STUDENT DISABILITY CENTER

Otter.ai

- Automatic Speech Recognition
- Artificial Intelligence
- Add words and names
- Search through transcript
- Highlights and image

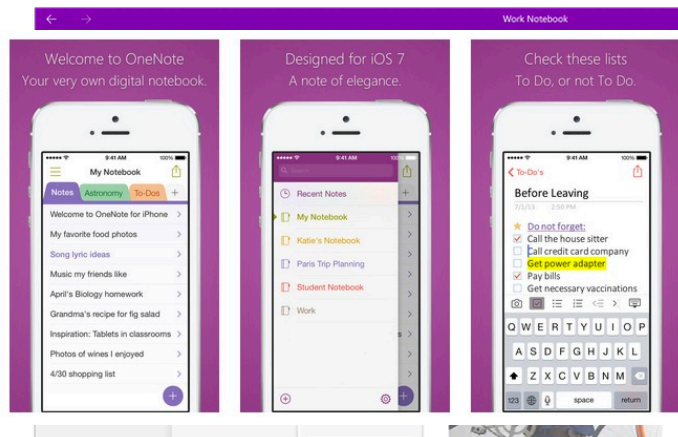


23

STUDENT DISABILITY CENTER

OneNote

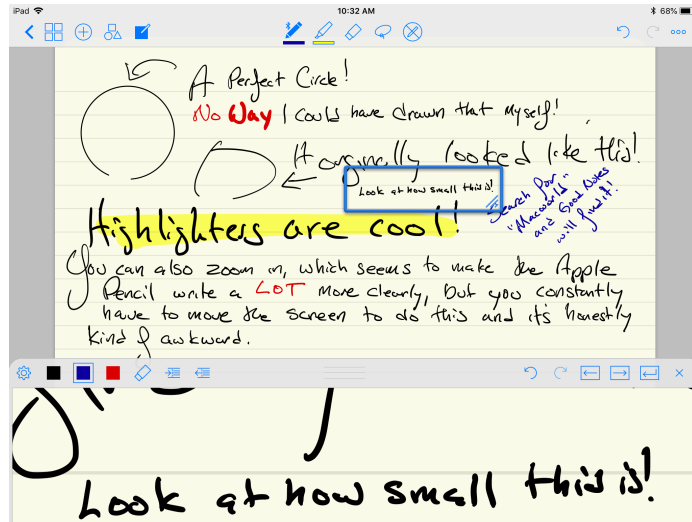
- Office365
- OneDrive Sync & Share



24

### Honorable Mentions

- Notability
- GoodNotes



25

### Dictation Apps

#### PC

- Dragon Naturally Speaking

#### Mac

- Voice Control
- Dictate



26

## STUDENT DISABILITY CENTER

## Center for Accessible Technology (CAT) Lab

- <http://cat.ucdavis.edu>
- 6 Mac Minis
- Hovercam scanner
- ScanSnap document scanner
- Epson flatbed scanner
- CCTV document reader
- Additional accessible input devices available upon request



27

## STUDENT DISABILITY CENTER

## Cloud Services

- OneDrive
- Google Drive
- Box.com

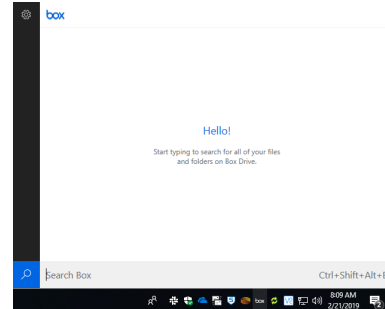
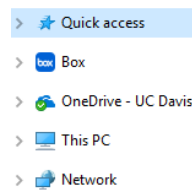


28

## STUDENT DISABILITY CENTER

**Box.com**

- <https://ucdavis.box.com>
- Box Drive is available for personal computers
- Mobile app available, but requires iOS 12.0+
- Storage UNLIMITED!

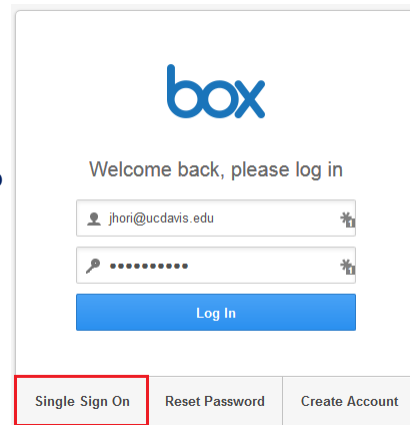


29

## STUDENT DISABILITY CENTER

**Box.com**

- Can set to auto save photos and files to cloud (not automatic)
- Login with Single Sign On (SSO) using your Kerberos information
- Can recover deleted content
- Add-ons and plug-ins available for multi-user editing
- After graduation, student maintains access to all files.
  - Up to 10G available for storage. May not be able to upload, but can download files.



30

STUDENT DISABILITY CENTER

**SDC Testing Center**

[examacom@ucdavis.edu](mailto:examacom@ucdavis.edu)



31

STUDENT DISABILITY CENTER

**Questions?**



32



STUDENT DISABILITY CENTER

**Thank you for attending!**

**Assistive Technology:**

- Joshua Hori
- [jhori@ucdavis.edu](mailto:jhori@ucdavis.edu)
- 12-1 Zoom Drop in
- Zoom ID: 986565387

**SDC Collaborations:**

- Jennifer Billeci
- [jbilleci@ucdavis.edu](mailto:jbilleci@ucdavis.edu)

**SDC Main Office:**

- [sdcs@ucdavis.edu](mailto:sdcs@ucdavis.edu)
- 530-752-2773
- [sdc.ucdavis.edu](http://sdc.ucdavis.edu)

